

Melanocytes (Albinos) derived from
human induced pluripotent stem cells
PCi-MEL_ALB

Product sheet

DESCRIPTION

Product Ref. PCi-MEL_ALB

Associated product: PhenoCULT®-MEL culture medium.

Phenocell provides Melanocytes (PCi-MEL_ALB), developed from human induced pluripotent stem cells (iPSC), at low passage (P3-P4). PCi-MEL_ALB are cryopreserved below -135°C. Viability after thawing is > 90%. A protocol for thawing and culture is available on our website: PCi-MEL_ALB_User's Guide. Shipping is on dry ice.

Product	Catalog No.	Quantity	Donor
Human iPSC-derived Melanocytes	PCi-MEL_ALB	10 ⁶ cell/vial	Albinos (OCA1, female)

PCi-MEL_ALB are suitable for organotypic culture in 3D and incorporation into human full skin reconstruction.

STORAGE

Store at -135°C or colder (vapor phase of liquid nitrogen or deep freezer) for 12 months from date of receipt. Use thawed samples immediately.

PRODUCT USE

PCi-MEL_ALB are intended for IN VITRO RESEARCH USE ONLY and are not to be used for any other purpose, which includes but is not limited to, unauthorized commercial uses, in vitro diagnostic uses, ex vivo or in vivo therapeutic uses or any type of consumption or application to humans or animals.

SAFETY PRECAUTIONS

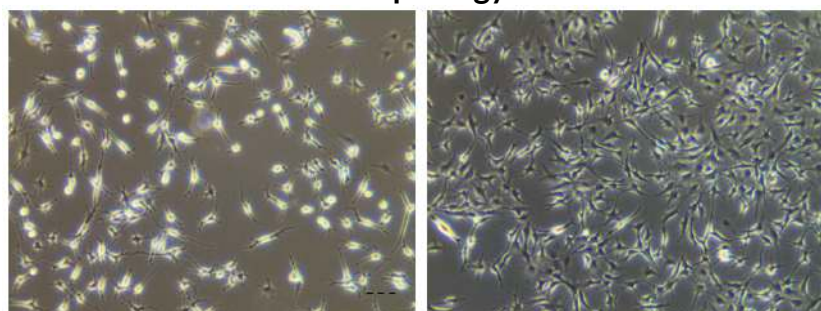
These recommendations are based on prudent application of professional judgment. Wear the appropriate personal protection equipment (PPE) and handle the frozen vials with due caution. This product should be treated as potentially infectious and only used in biological safety level 2 premises and conditions. Do not ingest. In case of contact with eyes, rinse immediately with plenty of water for at least 15 min and seek medical advice. Environmental measures: soak up with inert absorbent material. Clean with bleach and rinse thoroughly. Prevent further leakage or spillage if safe to do so. Phenocell cannot be held liable for any damage or losses resulting from the handling or from contact with the product as described herein.



QUALITY CONTROL

For more details, refer to lot-specific Certificate of Analysis. PCi-MEL_ALB are derived from qualified human iPSC and have been validated for morphology, purity and high expression levels of specific markers. PCi-MEL_ALB display normal karyotype and tested negative for mycoplasma, HBV, HCV, HIV before freezing.

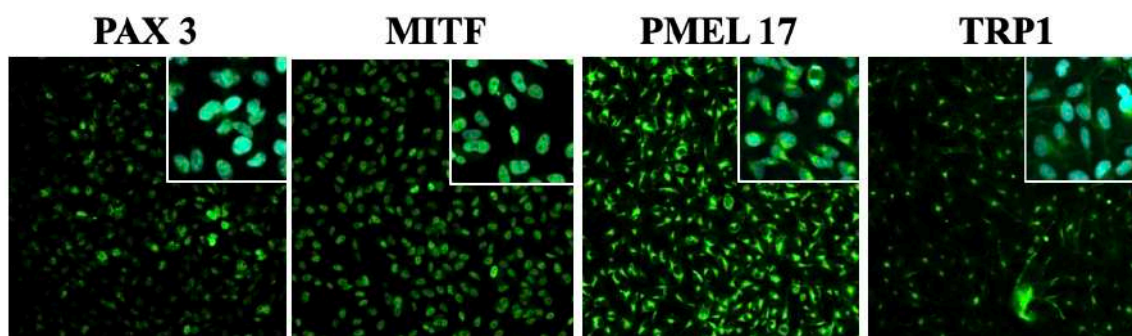
Morphology



PCi-MEL_ALB display a conspicuous pigmentation and stellate morphology characteristic of proliferative melanocytes (scale bar; 50 μ m).

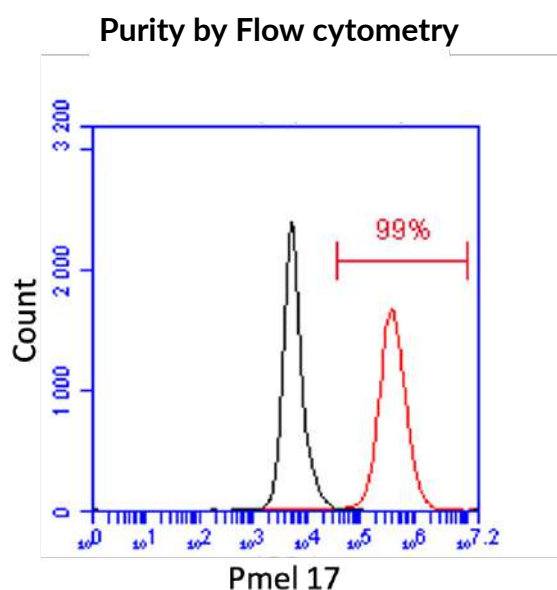
PCi-MEL will adopt an elongated morphology upon maturation, when proliferation slows down. Use PhenoCULT-MEL for optimal expansion.

Immunohistochemistry for melanocyte markers



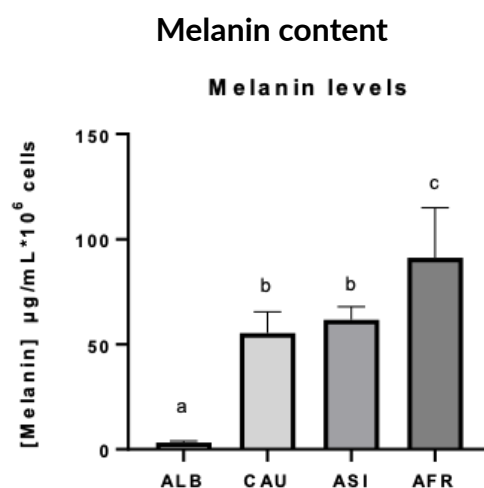
PCi-MEL_ALB express key melanocyte markers, including Paired Box 3 (PAX3) and Microphthalmia associated transcription factor (MITF), Premelanosome Protein (PMEL17) and Tyrosinase Related Protein 1 (TYRP1), two proteins required for melanin production (scale bar: 100 μ m).





PCi-MEL_ALB purity is above 90% by PMEL17 expression.

Black : isotype control ; Blue : PMEL17 antibody



PCi-MEL_ALB show a lack of melanin accumulation compared to melanocytes from normal donors of different phototypes.

FOR RESEARCH USE ONLY

Not intended for human or animal diagnostic, therapeutic or clinical applications.



USERS NOTICE

Phenocell's production of somatic cells differentiated from iPS cells is performed under license from iPS-Academia Japan (Kyoto, Japan) that implies restrictions for Customers (Users). Make sure that you have read and understood the User Notice below before purchasing our products.

USER NOTICE

- (a) User may use the Licensed Differentiated Cells for internal research, including but not limited to screening potential drug compounds for efficacy and safety, and for the provision of such services to Third Parties;
- (b) User shall not administer the Licensed Differentiated Cells in human or animal subjects for human or animal therapeutic, diagnostic or prophylactic purposes, including but not limited to clinical applications, cell therapy, transplantation, and/or regenerative medicines;
- (c) User may transfer the Licensed Differentiated Cells to Third Party in accordance with the User Restriction; and
- (d) no other right, express or implied, is conveyed by the sale of Licensed Differentiated Cells or the provision of generation services of Licensed Differentiated Cells.

